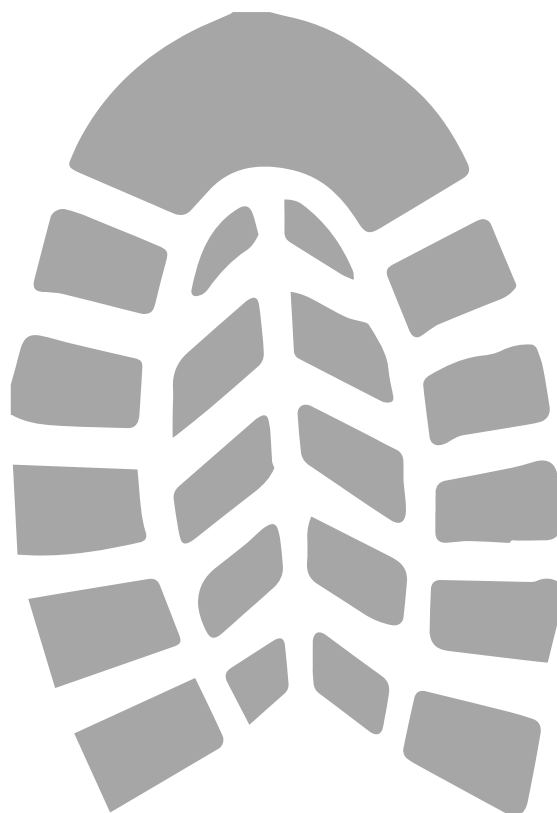
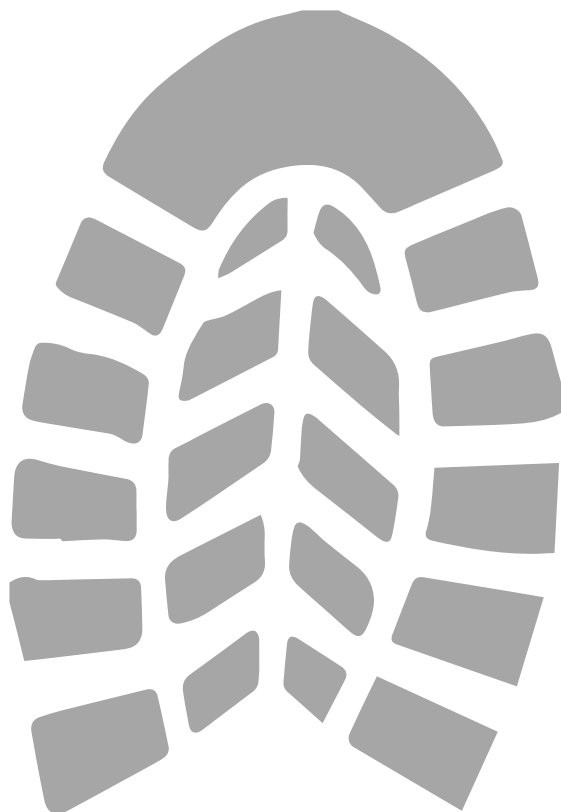


**Draw and color  
invasive species that  
got caught on these  
shoes during a hike!**



# Did you know?

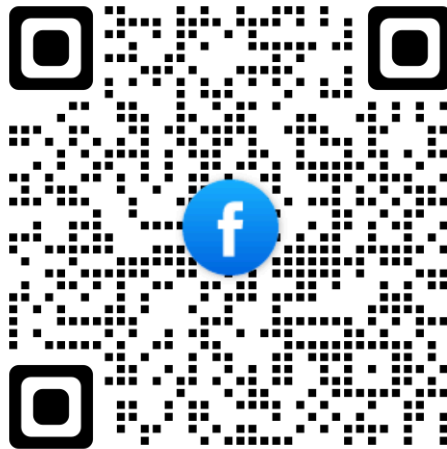
One of the most common ways invasive species are spread from one place to another is dirty footwear.

Here are just a few things that may be hiding in your treads:

- Seeds
- Plant Fragments
- Microscopic Eggs
- Disease causing pathogens

You can prevent the spread of invasive species and the damages they cause by following these steps:

1. Scrape/ brush away any dirt or debris from your shoes into the trash.
2. Thoroughly clean shoes using soapy water, sanitizing spray, a diluted bleach solution, or an all purpose cleaner.
3. Rinse and Dry.
4. Repeat this step in between every hiking or recreational location!



**Detroit River Western Lake Erie Cooperative Weed Management Area**